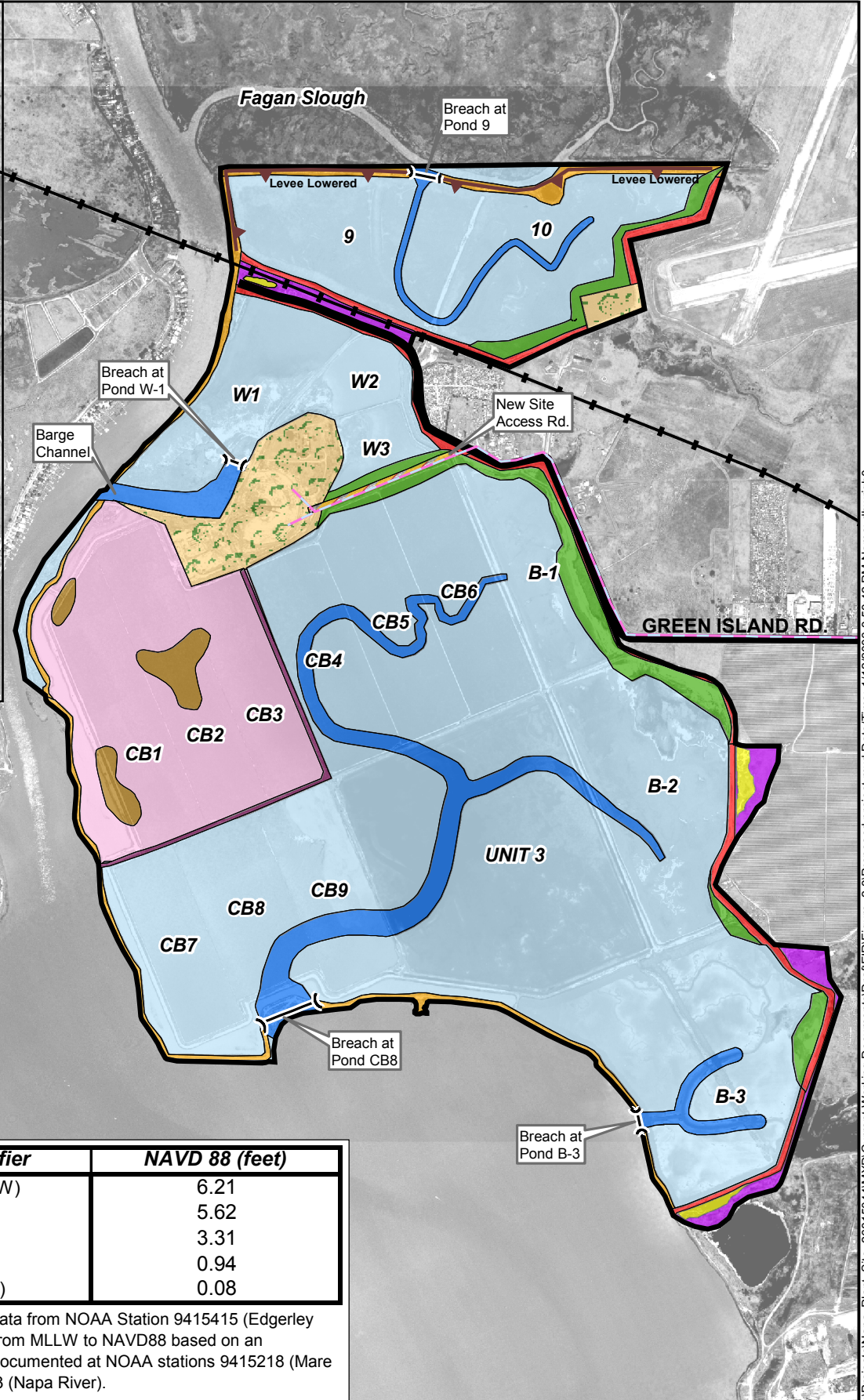


Legend

-  Levee Breaches
-  Proposed Water Pipeline Alignment
-  Rail Roads
-  Local roads
-  Project Boundary
-  Existing Levee
-  Islands in Managed Pond
-  Levee Improvements
-  Managed Pond
-  Managed Pond Levee
-  New Access Road
-  Seasonal Wetland (Ecotone Community)
-  Seasonal Wetland (Pickleweed Community)
-  Tidal Channel
-  Tidal Marsh
-  Tidal Marsh (Ecotone Community)
-  Uplands



NOAA Tidal Benchmark Data

Tidal Elevation Identifier	NAVD 88 (feet)
Mean Higher High Water (MHHW)	6.21
Mean High Water (MHW)	5.62
Mean Sea Level (MSL)	3.31
Mean Low Water (MLW)	0.94
Mean Lower Low Water (MLLW)	0.08

Note: Elevations based on mean data from NOAA Station 9415415 (Ederley Island, MLLW datum). Conversion from MLLW to NAVD88 based on an interpolation between conversions documented at NOAA stations 9415218 (Mare Island Naval Shipyard) and 9415623 (Napa River).

Source: Orthophotos of Napa County, April, 2004







Napa Plant Site
Restoration Project
26815044

Proposed Project

Figure
2-4

URS Corporation L:\Projects\Napa_Plant_Site_26815044\MXD\Current Working Documents\DraftEIR\Figure_2-3\Proposed project.mxd Date/Time: 1/12/2006 3:53:42 PM Name: dhwright0